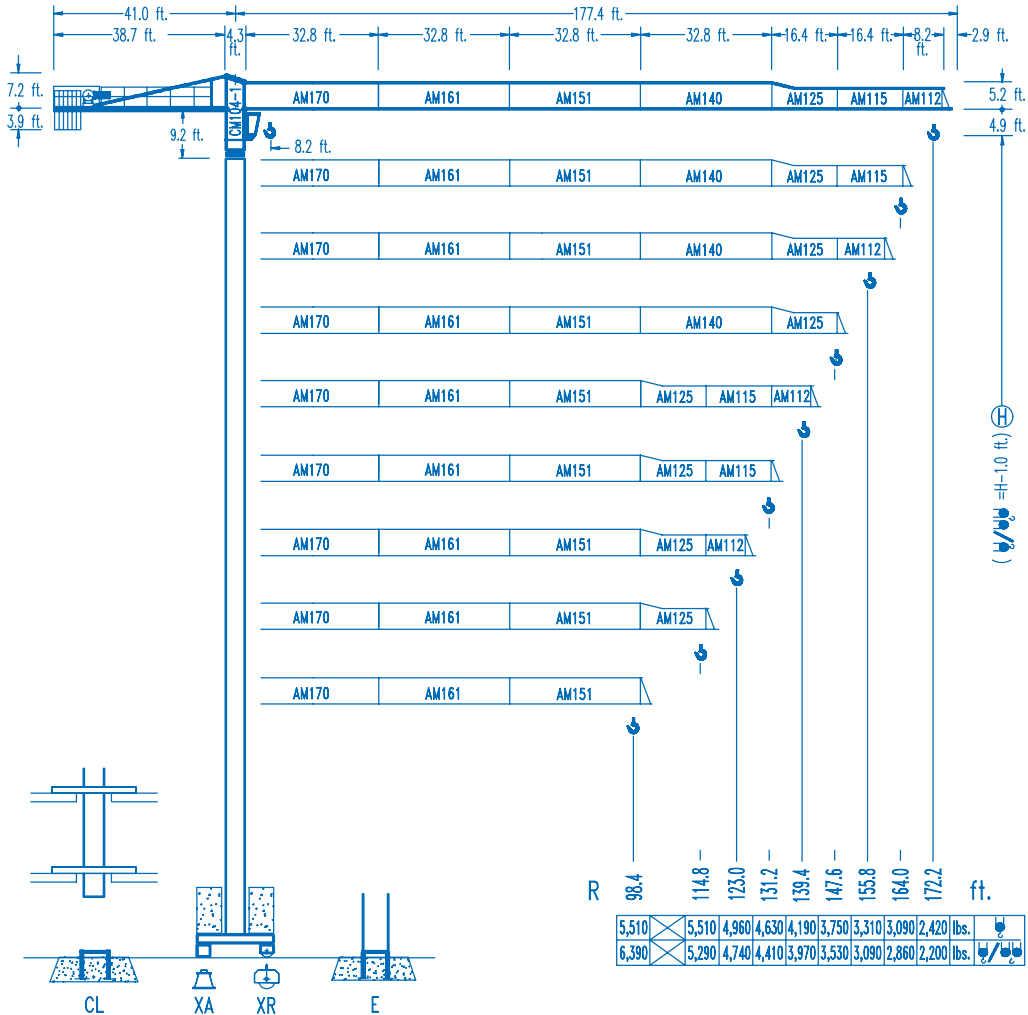




LC-5211

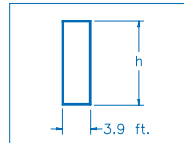
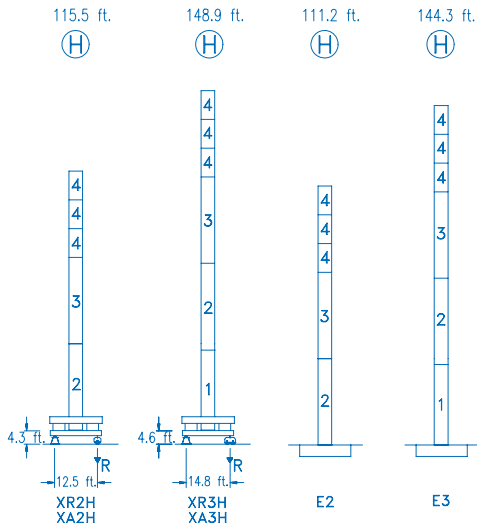
11,020 lbs.



CE
DIN 15018 H1 B3

R	R(Cmax)	Cmax	65.6	82.0	98.4	114.8	123.0	131.2	139.4	147.6	155.8	164.0	172.2	ft.
172.2	87.9 ft.	5,510	5,510	5,510	4,830	4,010	3,700	3,420	3,170	2,950	2,750	2,580	2,420	
	46.6 ft.	11,020	7,450	5,730	4,580	3,790	3,480	3,200	2,950	2,730	2,530	2,360	2,200	
164.0	101.0 ft.	5,510	5,510	5,510	4,740	4,360	4,060	3,770	3,500	3,280	3,090	2,860		
	53.5 ft.	11,020	8,730	6,740	5,540	4,520	4,140	3,830	3,550	3,280	3,060	2,860		
155.8	101.4 ft.	5,510	5,510	5,510	4,760	4,390	4,080	3,790	3,530	3,310	3,090			
	53.5 ft.	11,020	8,770	6,790	5,470	4,540	4,170	3,860	3,570	3,310	3,090			
147.6	106.3 ft.	5,510	5,510	5,510	5,050	4,650	4,320	4,010	3,750					
	56.1 ft.	11,020	9,260	7,160	5,800	4,830	4,430	4,100	3,790	3,530				
139.4	110.2 ft.	5,510	5,510	5,510	5,240	4,850	4,500	4,190						
	58.4 ft.	11,020	9,650	7,470	6,040	5,020	4,630	4,280	3,970					
131.2	112.8 ft.	5,510	5,510	5,510	5,400	4,980	4,630							
	59.7 ft.	11,020	9,920	7,690	6,210	5,180	4,760	4,410						
123.0	112.2 ft.	5,510	5,510	5,510	5,380	4,960								
	59.4 ft.	11,020	9,850	7,650	6,170	5,160	4,740							
114.8	114.8 ft.	5,510	5,510	5,510	5,510									
	60.7 ft.	11,020	10,090	7,850	6,350	5,290								
98.4	98.4 ft.	5,510	5,510	5,510										
	61.0 ft.	11,020	10,160	7,890	6,390									

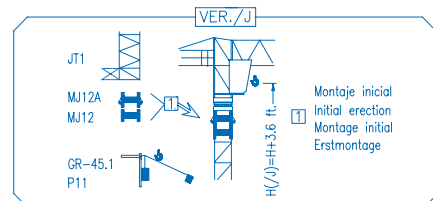
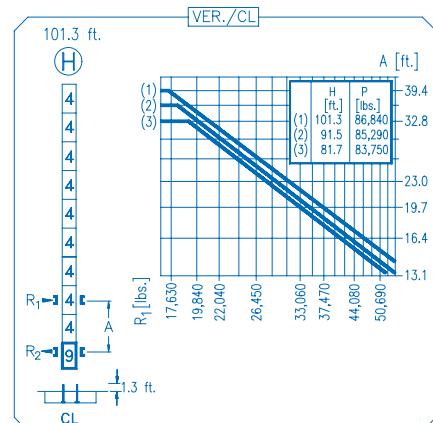
DS.0546.01 12/05 Reserva de modificaciones.- Subject to modifications.- Modifications réservées.- Konstruktionsänderungen vorbehalten.



N	Ref.	h
1	MT123	33.1 ft.
2	MH124A	38.7 ft.
3	MH124-1	38.7 ft.
4	MH121	9.8 ft.
9	CL20	7.2 ft.

MH124=(4)MH121-0.6 ft.

- H=H+0.6 ft.
- H=H
- H=H
- H=H-0.6 ft.



R. máx. En servicio / In operation / En service / In Betrieb
XR2H 96,650 lbs.
XR3H 144,620 lbs.

R. máx. Fuera de servicio / Out of service / Hors service / Ausser Betrieb
XR2H 89,730 lbs.
XR3H 101,630 lbs.

CS2-1.9
 3 hp.
 66 ft./min
 189 ft./min

CFU-2.2
 3 hp.
 0 ⇄ 262 ft./min

GR-9.0
 66 ft.lbs.
 0 ⇄ 0.8 rpm

TS2-4.5 **TS2-5.5**
 2x33 ft.lbs. 2x40 ft.lbs.
 0 ⇄ 78 ft./min
XR2H **XR3H**

820 ft.
ES3-18-12
 29 hp.

	I	II	III
ft./min	32	126	252
lbs.	5,510	5,510	2,860
ft./min	16	63	126
lbs.	11,020	11,020	5,730

820 ft.
EFU2-18-12
 24 hp.

Tensión de alimentación / Operating voltage / Tension de service / Betriebsspannung
480 V
3 ph
60 Hz

Opcional / Optional / En option / Kaufoption



Tel.: (34) 948 335 020
 Fax: (34) 948 330 810
 e-mail: info@comansa.com
 www.comansa.com

Polígono Urbizkain
 E-31620 HUARTE-PAMPLONA.- SPAIN

DS.0546.01 12/05 **LC-5211** 11,020 lbs.